



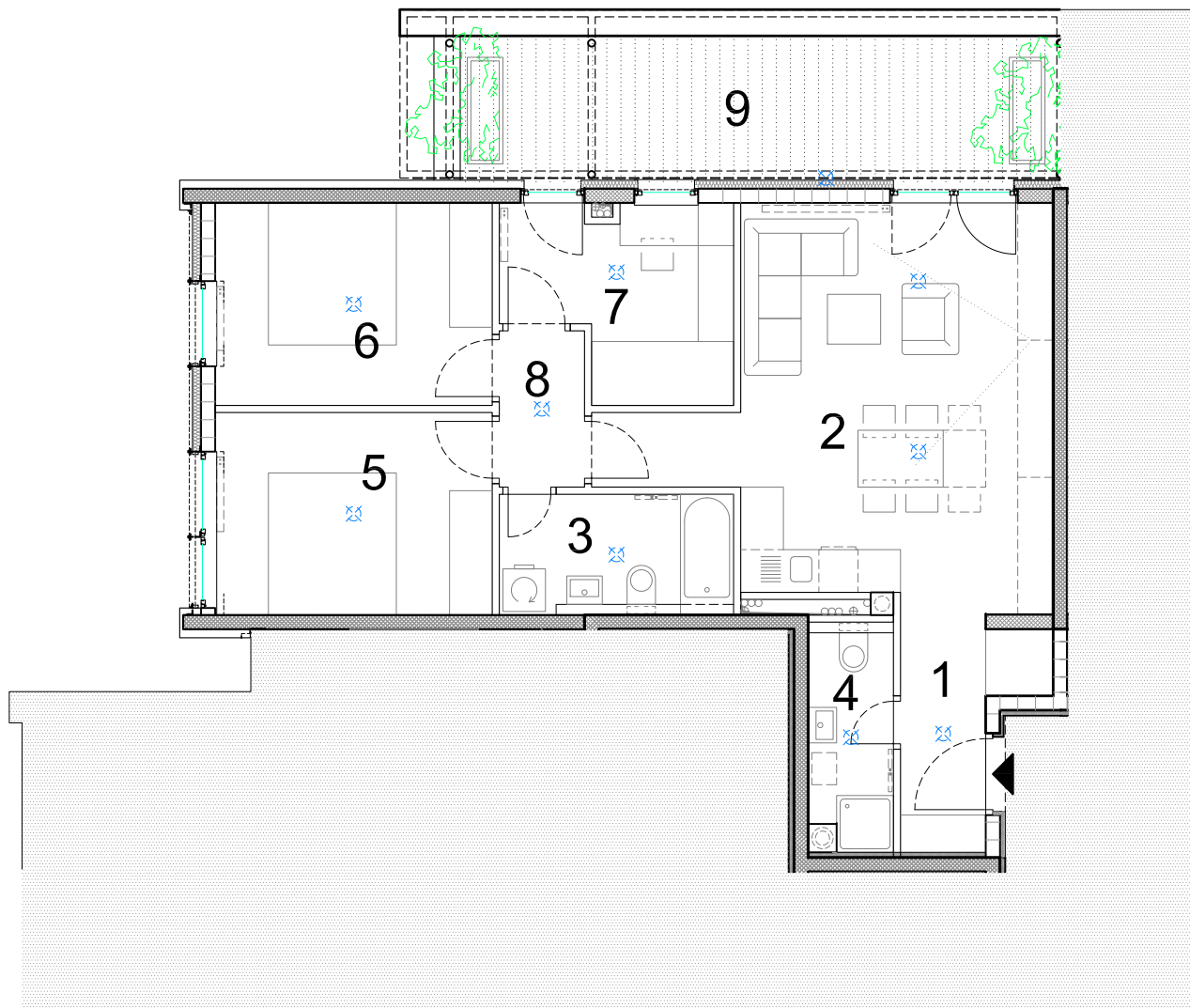
**S.3.35.**

\* - četverosobni -

3. KAT / POTKROVLJE

ISKAZ NETTO POVRŠINE STANA:

|                              |                           |
|------------------------------|---------------------------|
| 1. hodnik                    | 4,66m <sup>2</sup>        |
| 2. dnevni boravak s kuhinjom | 27,24m <sup>2</sup>       |
| 3. kupaonica                 | 5,61m <sup>2</sup>        |
| 4. kupaonica 2               | 3,73m <sup>2</sup>        |
| 5. soba                      | 11,12m <sup>2</sup>       |
| 6. soba 2                    | 11,12m <sup>2</sup>       |
| 7. soba 3                    | 7,76m <sup>2</sup>        |
| 8. predprostor               | 2,64m <sup>2</sup>        |
| 9. terasa                    | 8,58m <sup>2</sup>        |
| <b>UKUPNO:</b>               | <b>82,46m<sup>2</sup></b> |



0 | 1 | 2 | 5 | m



**NN BILIĆ** d.o.o.